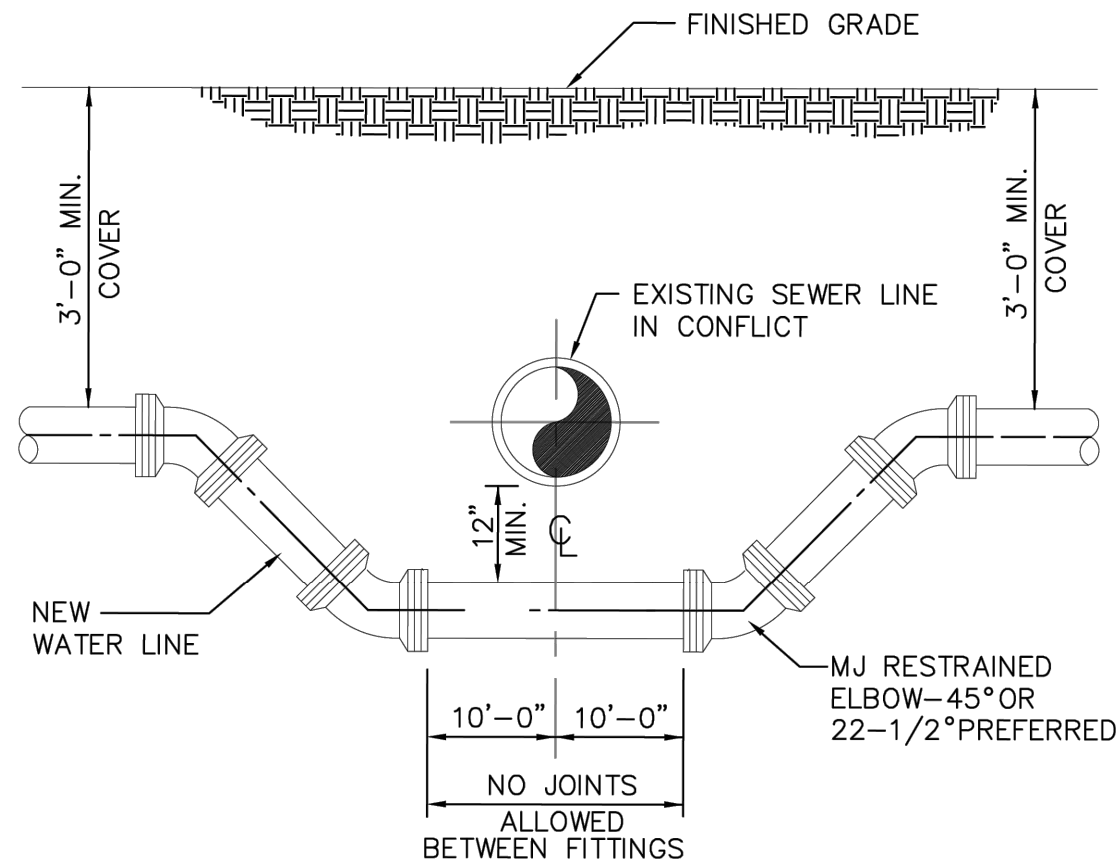


Plotted By:Abdoul Emmanuel Sheet:Mill Creek-Pompano Layout-C-402 WATER & SEWER DETAILS September 09, 2025 05:38:35pm K:\FTL\_Civil\043 jobs\043175014 Mill Creek-Pompano\Design\CADD\PlanSheets\C-UTLL-DET.dwg  
This document, together with the concepts and designs presented herein, is intended only for the specific purpose and client for which it was prepared. Reuse of and improper reliance on this document without written authorization and adaptation by Kimley-Horn and Associates, Inc. shall be without liability to Kimley-Horn and Associates, Inc.

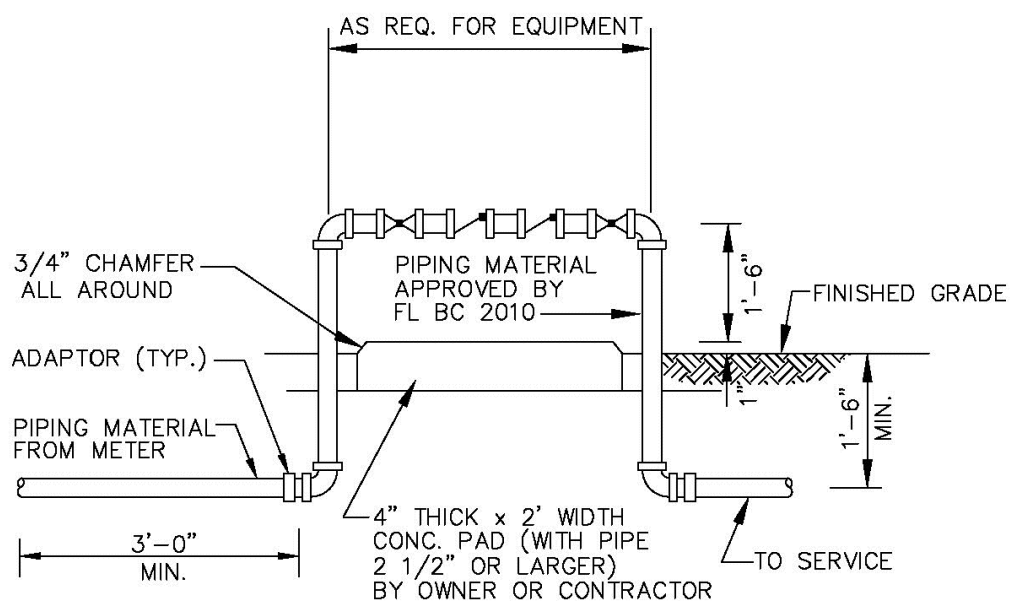


NOTES:  
WHERE CONDITIONS PERMIT, PIPE DEFLECTION MAY BE USED  
INSTEAD OF BENDS TO OBTAIN THE MINIMUM CLEARANCE.  
FACTORY OFFSETS MAY BE USED.

### TYPICAL CONFLICT DETAIL

USE MEGALUGS AT ALL PIPE JOINTS  
ALL D.I.P. TO BE PAINTED  
BLUE ON TOP HALF OF PIPE.

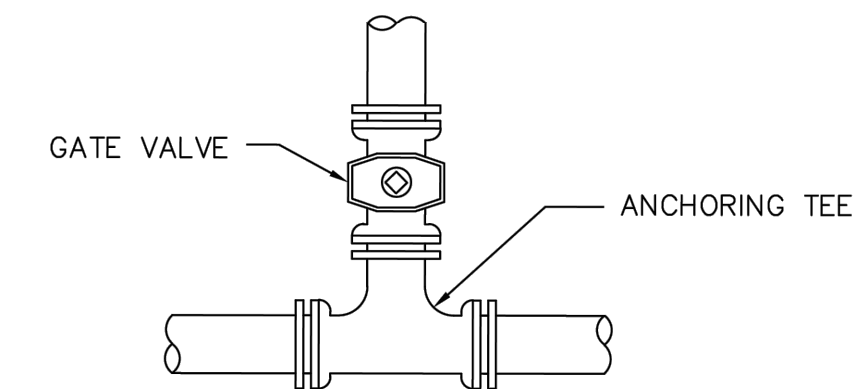
ENGINEERING STANDARDS 2019			
REVISIONS		ENGINEERING DIVISION CITY OF POMPAÑO BEACH	TYPICAL CONFLICT (WATER)
BY	DATE		
S.S.	04-2005		
S.S.	01-2012		
SCALE: N.T.S.			DATE: JUNE 1996 DWG. NO. 108-1



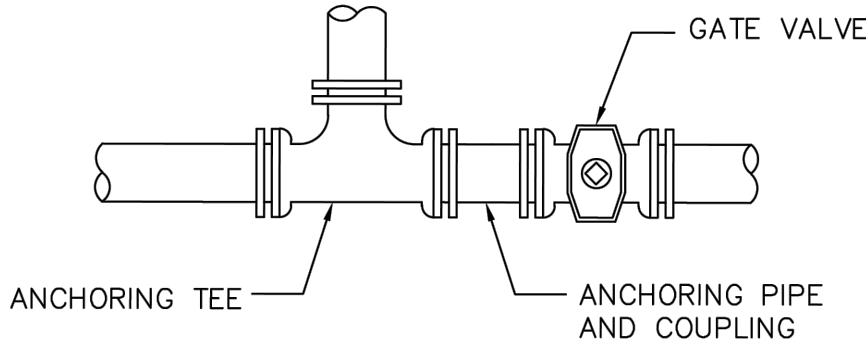
### BACKFLOW PREVENTER

USE MEGALUGS AT ALL PIPE JOINTS 3" AND LARGER  
PLEASE SEE METER INSTALL DIMENSION LIST ON STANDARD NO. 106-4  
SMALL UNITS UNI-STRUT SUPPORT

ENGINEERING STANDARDS 2025			
REVISIONS		ENGINEERING DIVISION CITY OF POMPAÑO BEACH	BACKFLOW PREVENTER
BY	DATE		
T.W.	04-2008		
S.S.	03-2009		
S.S.	11-2012		
S.S.	01-2013		
SCALE: N.T.S.			DATE: MAY 2022 DWG. NO. 106-1



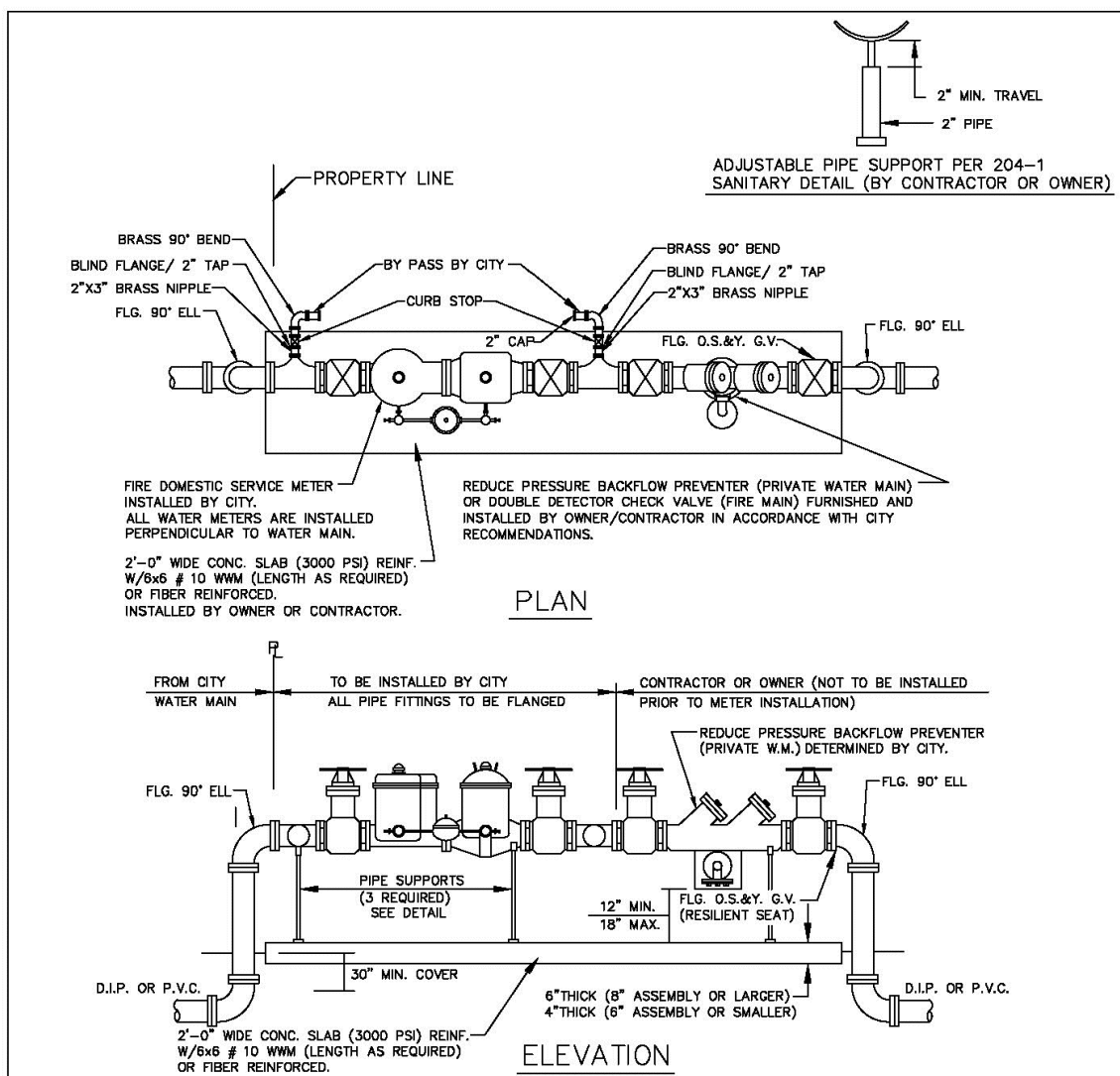
### RESTRAINED VALVE AT TEE (BRANCH)



### RESTRAINED VALVE AT TEE (IN LINE)

USE MEGALUGS AT ALL PIPE JOINTS  
ALL D.I.P. TO BE PAINTED BLUE  
ON THE TOP HALF OF PIPE.

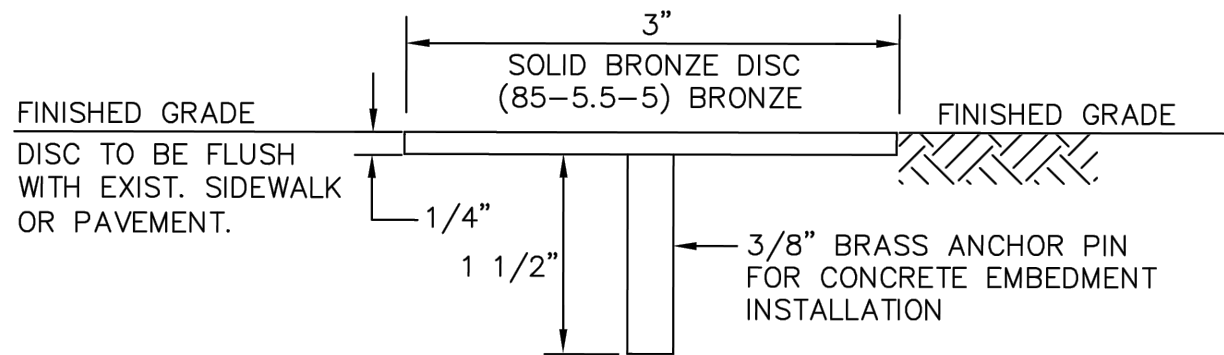
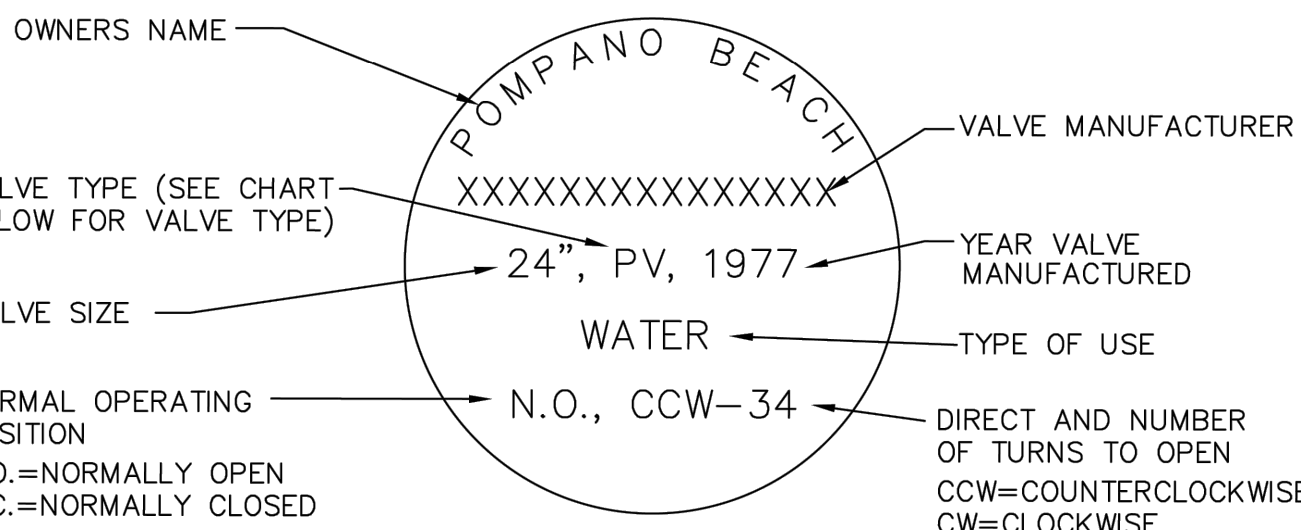
ENGINEERING STANDARDS 2019			
REVISIONS		ENGINEERING DIVISION CITY OF POMPAÑO BEACH	RESTRAINED VALVE AT TEE
BY	DATE		
S.S.	JUNE 2005		
SCALE: N.T.S.			DATE: JUNE 1996 DWG. NO. 111-1



### MASTER METER AND BACKFLOW DEVICE DETAILS

NOTES:  
1. THE BACKFLOW PREVENTER FOR THE BY-PASS SHALL BE DCCV OR RPZ.  
2. PLEASE NOTE THAT WATER METERS 3" AND LARGER ARE SUBJECT TO AN APPROXIMATE ORDER  
LEAD TIME OF 60 TO 75 DAYS AFTER FULL PAYMENT. PLEASE CONTACT CUSTOMER SERVICE  
AT 954-786-4637 TO ARRANGE FOR METER PROCUREMENT AND INSTALLATION.  
3. USE MEGALUGS AT ALL PIPE JOINTS  
4. PLEASE SEE METER INSTALL DIMENSION LIST ON STANDARD NO. 106-4

ENGINEERING STANDARDS 2025			
REVISIONS		ENGINEERING DIVISION CITY OF POMPAÑO BEACH	MASTER METER AND BACKFLOW DEVICE
BY	DATE		
S.S.	05-2011		
S.S.	11-2012		
S.S.	12-2013		
S.S.	11-2016		
SCALE: N.T.S.			DATE: MAY 2022 DWG. NO. 106-2

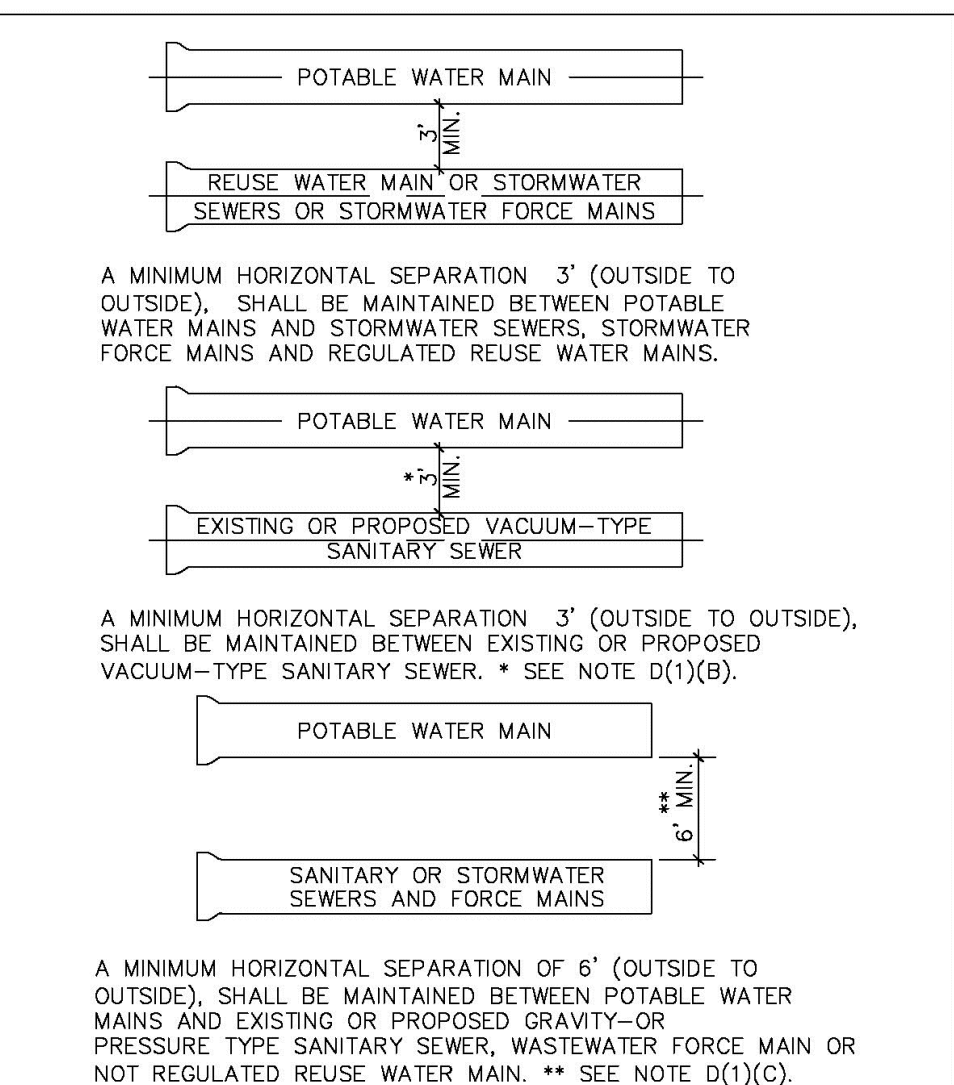


VALVE TYPES:  
BALL VALVE---BALLV  
RESILIENT WEDGE GATE VALVE---RWGV  
BUTTERFLY VALVE---BV  
PLUG VALVE---PV

NOTES:  
1. VALVE INFORMATION TO BE TRIPLE ENGRAVED INTO  
TOP SURFACE WITH 1/4" CAPITAL LETTERS.  
2. ENTIRE MARKER TO BE COATED WITH CLEAR  
EPOXY TO PREVENT TARNISHING.  
3. VALVE INFORMATION TO BE APPROVED BY  
CITY OF POMPAÑO BEACH UTILITIES DEPARTMENT.  
4. MARKERS SHALL BE MANUFACTURED BY  
RG WRENCH, OR APPROVED EQUAL

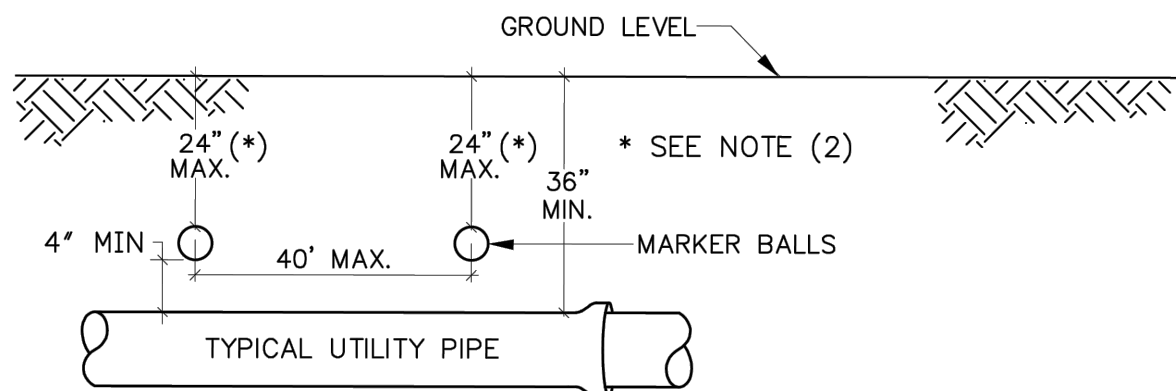
### UNDERGROUND VALVE IDENTIFICATION MARKER

ENGINEERING STANDARDS 2019			
REVISIONS		ENGINEERING DIVISION CITY OF POMPAÑO BEACH	UNDERGROUND VALVE IDENTIFICATION MARKER
BY	DATE		
S.S.	JUNE 2005		
T.W.	11-2007		
T.W.	02-2008		
SCALE: N.T.S.			DATE: FEB. 1998 DWG. NO. 115-1



### MINIMUM HORIZONTAL SEPARATION REQUIREMENTS FOR POTABLE WATER, REUSE, STORMWATER AND SEWER LINES

ENGINEERING STANDARDS 2025			
REVISIONS		ENGINEERING DIVISION CITY OF POMPAÑO BEACH	MIN. HORIZONTAL SEPARATION FOR POTABLE WATER
BY	DATE		
S.S.	01/12		
SCALE: N.T.S.			DATE: JAN. 2022 DWG. NO. 121-1



### GENERAL NOTES:

1. ALL UTILITY PIPE SHALL BE INSTALLED WITH 4"Ø MARKING BALLS PLACED EVERY 40' AND AT  
EVERY FITTING, FOR IDENTIFICATION AND WARNING PURPOSES, BURIED ABOVE THE PIPE AT A  
MAXIMUM DEPTH OF 24 INCHES OR AS APPROVED BY THE OWNER. IT SHALL BE COLOR CODED  
AND WORDED AS FOLLOWS:

POTABLE WATER.  
A. COLOR: BLUE PER 62-555.320(21)(b)(3) F.A.C.  
B. LETTERING: WATER  
C. FREQUENCY OF MARKER BALLS SHALL BE 145.7 Khz.  
D. THE MARKER BALLS CAN BE BURIED IN ANY ORIENTATION.

THE MARKER BALLS SHALL BE DETECTABLE BY STANDARD METAL DETECTION  
EQUIPMENT AND SHALL BE MANUFACTURED BY TEMPO OR 3M LOCATOR SYSTEM OR  
EQUIVALENT (FREQUENCY 145.7 Khz )

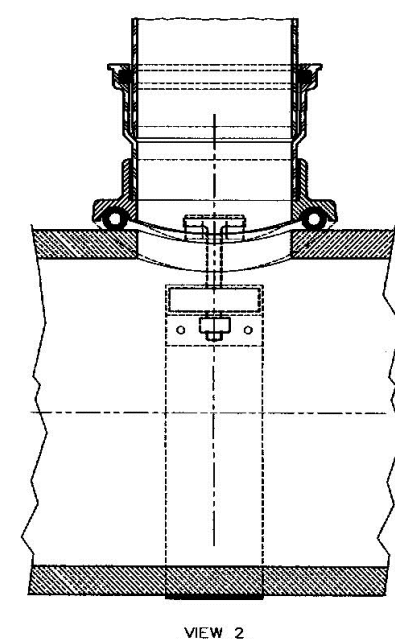
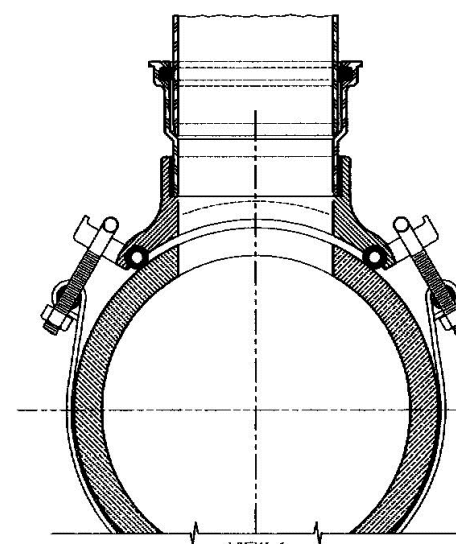
2. FOR LARGE DIAMETER PIPE INSTALLED AT DEPTHS BELOW 4'-0" MARKER BALLS SHALL BE  
PLACED AT A MAXIMUM DEPTH OF 4'-0" BELOW GRADE \*.

### WATER PIPE IDENTIFICATION

ENGINEERING STANDARDS 2019			
REVISIONS		ENGINEERING DIVISION CITY OF POMPAÑO BEACH	WATER PIPE IDENTIFICATION
BY	DATE		
S.S.	01/12		
S.S.	06/16		
SCALE: N.T.S.			DATE: JAN. 2012 DWG. NO. 119-1

### INLET: GASKETED BELL - SDR 35 PVC

Base Coating is ASTM A-48 Class 30 Cast Iron  
(Various Coatings available to R-3275 - 3000' Ø. Min.)  
PVC Adapter is on ASTM D3034, SDR-35  
Gasketed Bell  
Adapter is cemented permanently in place with two-part  
urethane adhesive  
Base of Saddle is dip-coated in a Water-based  
Bimolecular Coating  
Strap is 24 ga. x 2.5" wide Type 304 Stainless Steel  
Strap Pins are .75" dia. Type 303 Stainless Steel  
T-Bolts are .375" - 16 Type 304 Stainless Steel  
Nuts and Washers are Type 18-8 Stainless Steel  
O-Ring is ASTM C-361-77 Tubular Polyisoprene  
4" inlet requires a 4" dia. Tap in the Sewer Main  
6" inlet requires a 6" dia. Tap in the Sewer Main  
(Sewer Main must be at least 8" dia.)  
Note: This Dwg. supercedes Dwg. No. R-3408-D2



### TEE GRAVITY SEWER SADDLE TO BE USED WHEN A SEWER MAIN HAS BEEN LINED WITH A CURED IN PLACE MATERIAL

ENGINEERING STANDARDS 2025			
REVISIONS		ENGINEERING DIVISION CITY OF POMPAÑO BEACH	TEE GRAVITY SEWER SADDLE
BY	DATE		
S.S.	11/23/16		
SCALE: N.T.S.			DATE: MAY 2022 DWG. NO. 201-1

DRC

PZ25-12000028

10/15/2025

Kimley»Horn

© 2025 KIMLEY-HORN AND ASSOCIATES, INC.  
8201 PETERS ROAD, SUITE 2200, PLANTATION, FL 33324  
PHONE: 954-535-5100 FAX: 954-739-2247  
WWW.KIMLEY-HORN.COM REGISTRY NO. 35106

LICENSED PROFESSIONAL

KHA PROJECT  
043175014

DATE  
9/4/2025

SCALE  
AS SHOWN

DESIGNED BY  
GVF

DRAWN BY  
EA

CHECKED BY  
GVF

DATE:

WATER & SEWER  
DETAILS

MODERA POMPAÑO  
BEACH

PREPARED FOR

MCRT INVESTMENTS LLC  
FLORIDA  
POMPAÑO BEACH

SHEET NUMBER  
C-402